

Digital Video Security

Comprehensive Video Security with Talon DVR!



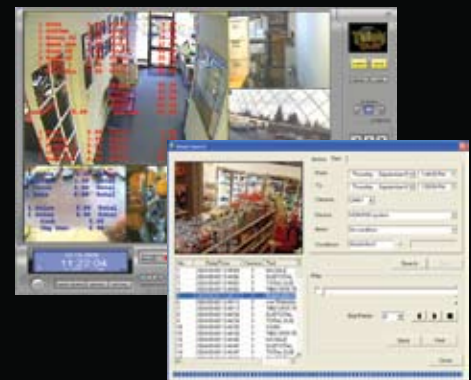
Talon Server Program Features

- 1,4,6,9,10,16,12 Multi Channel View Support
- Audio Monitoring and Recording
- Multiple Search Methods
- Pan, Tilt, Zoom & Focus Control Support
- Hardware Watchdog for Auto Reboot
- AVI / MPEG4 File Saving with Watermark
- Event Notification:
 - Beep, Mark, Pop-up, Talon-Net Remote Notify, Relay Output, E-Mail Message w/ Text & Image, Phone Message via Modem
- User Access Security
- TCP/IP Support for Remote Access
- Whole or Partial Image Motion Recording
- Image Masking Feature (LiveCap Only)

Talon-Net Client Program Features

- Multi Net DVR Central Station Support
- Remote Access to Multiple DVRs
- PTZ Control Including Preset and Tour Modes
- Image Controls for Brightness, Contrast, Hue, Resolution, Compression
- Display Live Video from Server
- Search Recorded Data by Time/Date, Motion, Text Match
- Save Remote Data Locally While Viewing
- Two-Way Voice Communication

Exceptional Clarity and Connectivity



POS Text Insertion

- Supports POS, ECR, Access Control & ATM
- Search by Text Match and Date / Time
- RS-232 / 422 / 485 and TCP/IP connectivity
- Up to 32 Devices per DVR Server
- Unique Parsing Utility for Custom Applications
- User-Defined Item Search Settings

Talon™ DVR Specifications

- LivCAP / ACAP Features**
- Up to 32 video input / 16 sensor in / 4 relay out (optional on ACAP)
 - Up to 2 sound input (16 channels optional)
 - Hardware Watchdog
 - Multi-View TV Out (1, 4, Normal) (Single View only on ACAP)
 - Real time display and record
 - MPEG4 Soft CODEC Recording
 - No Frame Loss
 - High Resolution 352x240, 704x240, 704x480
 - Pan / Tilt / Zoom Support (optional on ACAP)

- MPG / AMX Features**
- Up to 32 video input / 16 sensor in / 4 relay out (optional on AMX)
 - Up to 32 integrated sound input
 - Hardware Watchdog
 - Single View TV Out
 - Real time display and record (30fps / Chan)
 - MPEG4 On-Board Hardware Processor
 - No Frame Loss
 - High Resolution 352x240, 704x240, 704x480
 - Pan / Tilt / Zoom support (optional on AMX)
 - Small recording frame size (1~3 KB / Frame)
 - Low CPU Load

Direct Web Support

- Microsoft Internet Explorer Support
- No Special Software Required
- OCX Support
- View Live and Recorded Images
- Multiple Search Methods: Date/Time, Motion, Text, Single & Multi
- Audio Search
- 2-Way Voice Communication
- Image Saving: AVI Clip or JPEG Still



PDA Support

- Windows CE, Windows Mobile support
- Wireless access to DVR
- Live view & search over cellular phone internet connection



MODEL	RECORD FRAMES	VIEW FRAMES	VIDEO CHANNELS	AUDIO CHANNELS	TV-Out CHANNELS	SENSOR INPUTS	RELAY OUTPUTS	PTZ Control
Talon DVR ACap (Software Compression / Entry Level)								
120A16	120	120	16	2	1	16 (opt)	4 (opt)	(opt)
Talon DVR LivCap (Software Compression)								
120N16	120	120	16	2	1 - 16	16	4	Yes
240N16	240	240	16	2	1 - 16	16	4	Yes
12016LIV	120	480	16	2	1 - 16	16	4	Yes
24016LIV	240	480	16	2	1 - 16	16	4	Yes
Talon DVR LivCap 32 (Software Compression)								
240N32	240	240	32	2	1 - 32	16	4	Yes
480N32	480	480	32	2	1 - 32	16	4	Yes
Talon DVR MPG (Hardware Compression)								
MPG12004	120	120	4	4	1	4	4	Yes
MPG24008	240	240	8	8	1	8	4	Yes
MPG48016	480	480	16	16	1	16	8	Yes
Talon DVR MPG AMX (Hardware Compression)								
AMX48016	480	480	16	16	1	16 (opt)	8 (opt)	(opt)
AMX96032	960	960	32	32	1	32 (opt)	8 (opt)	(opt)

